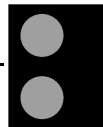
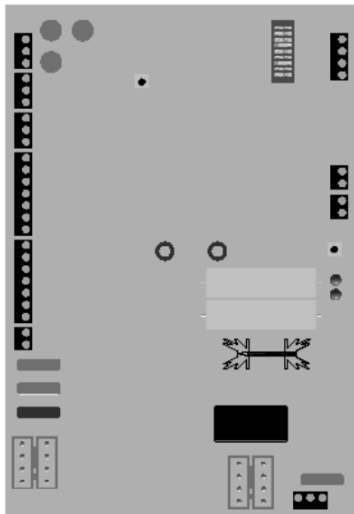
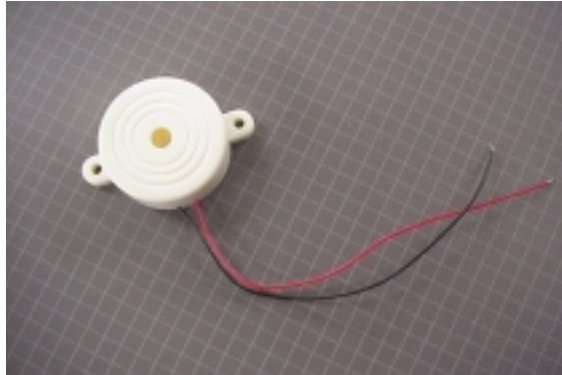


APOLLO

Gate Operators, Inc.

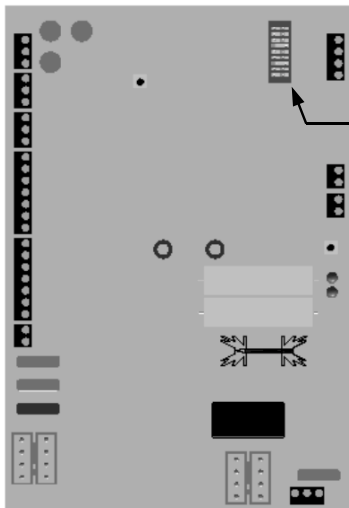
911 Siren



911 Siren Connection

Insert the RED wire in the OUT side of the black 2 pin connector.

Insert the BLACK wire in the GND side of the black 2 pin connector.



Siren Delay Switch

Program Switch #4 is the Siren Delay control. The factory default setting for this switch is OFF.

When the switch is in the OFF position, the siren output is active and the gates start moving immediately upon activation.

When switch #4 is in the ON position,